

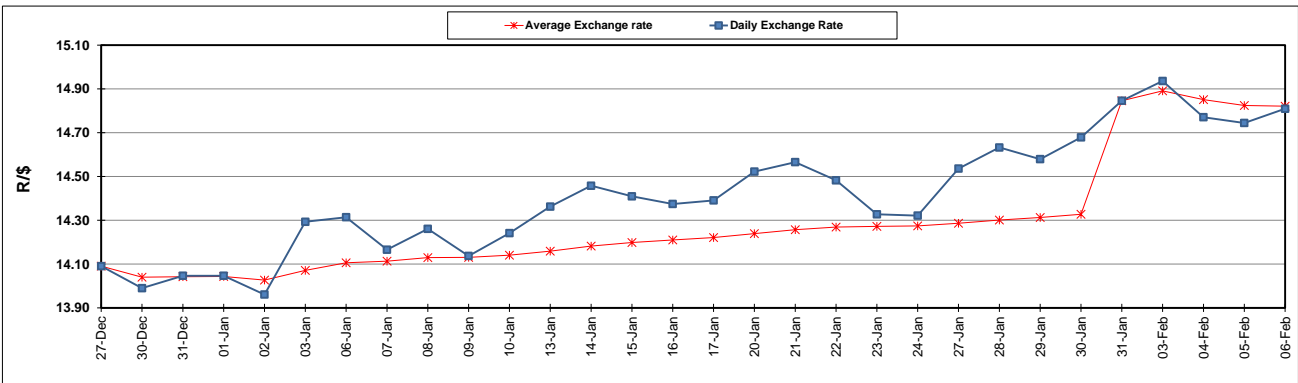
	PETROL 95 ULP	PETROL 93 ULP & LRP	DIESEL 0.05%	DIESEL 0.005%	ILL. PAR.
GAUTENG PUMP PRICE (SA c/l) AS FROM 05/02/2020	1,603.000	1,571.000	-	-	-
WHOLESALE PRICE (SA c/l) AS FROM 05/02/2020	-	-	1,457.260	1,462.660	924.728
SINGLE NATIONAL MAXIMUM RETAIL PRICE	-	-	-	-	1,176.000
BASIC FUEL PRICE - 06/02/2020 (SA c/l)	661.735	650.310	692.572	698.449	678.082
PRESS RELEASE CONTRIBUTION TO BFP 05/02/2020 - 06/02/2020 (SA c/l)	686.970	664.970	737.630	743.030	734.128
UNIT OVER/(UNDER) RECOVERY - 06/02/2020 (SA c/l)	25.235	14.660	45.058	44.581	56.046
AVERAGE BASIC FUEL PRICE 31/01/2020 - 06/02/2020	661.355	650.029	680.553	686.102	667.665
AVERAGE UNIT OVER/(UNDER) RECOVERY 31/01/2020 - 06/02/2020	33.415	22.741	60.077	59.928	68.263

ANALYSIS MOVEMENT OF AVERAGE OVER/(UNDER) RECOVERY

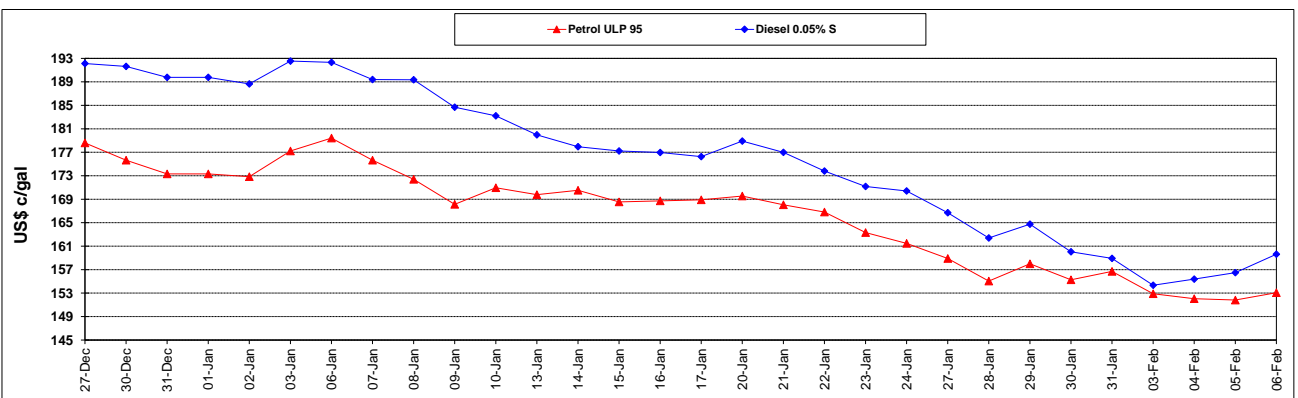
	PETROL 95	PETROL 93	DIESEL 0.05%	DIESEL 0.005%	ILL. PAR.
- MOVEMENT IN INTERNATIONAL PRODUCT PRICES	55.449	44.398	82.751	82.787	90.507
- MOVEMENT IN EXCHANGE RATE	(22.034)	(21.657)	(22.674)	(22.859)	(22.244)
AVERAGE UNIT OVER/(UNDER) RECOVERY 31/01/2020 - 06/02/2020	33.415	22.741	60.077	59.928	68.263

R/\$ EXCHANGE RATE - (R/\$14.8094 - 06/02/2020)

EXCHANGE RATE USED IN BASIC FUEL PRICE



INTERNATIONAL PRODUCT PRICES OF BASKET USED IN BASIC FUEL PRICE



BASIC FUEL PRICE IN SA CENTS PER LITRE

